



THE HIGH EFFICIENCY CAM SOLUTION

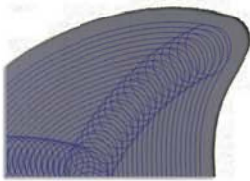
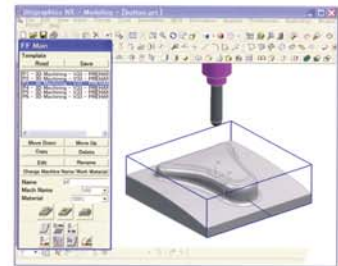


High Efficiency Machining can only be accomplished by combining advanced machining technologies with with NC data suitable for high speed machining. Incorporated in FF/cam are the advanced machining technologies Makino has accumulated through years of experience in high speed machining. Various types of high speed machining paths and an extensive database of cutting conditions have been captured in this multi-axis CAM Solution enabling you to quickly realize the benefits of high speed machining.

Simple Operation

FF/cam can be operated by just entering data into individual templates that are provided for each machining method. Because machining conditions are set automatically, programming work is kept to a minimum. Machining operations matching the user's shop operations can be defined and stored for later use.

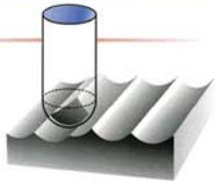
*With **FF/cam** machining paths are calculated automatically by specifying the part, tool and workpiece.*



Automatic Machine Path Generation

In addition to automatic trochoidal and half-width shift, **FF/cam** provides an extensive number of toolpath strategies specifically designed to minimize tool wear, maximize feedrates, assure consistent tool load and provide uniform stock thickness.

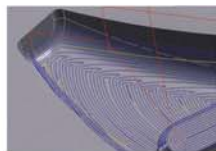
***FF/cam's** rest machining utilizes a stock model that senses excess stock, generating additional cuts and adjusting stepover values only where they are needed.*



Pursuit of Superior Surface Finishes

FF/cam is specifically designed to effectively work with the tight tolerances required to provide the surface finishes required to minimize or eliminate bench time. Automatic features such as overlapping cuts, constantly variable on-surface stepover location, spiral machining and motion matching surface flow assure the best possible surface finish.

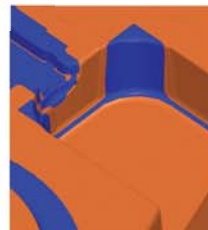
***FF/cam's** provides a special "Thin Rib" machining function that eliminates the part deflection associated with machining parts or tooling with thin wall features.*



Much Much More

Additional **FF/cam** capabilities include:

- Remaining Stock Analysis
- Minimum Radius Display
- 3+2 Machining
- Batch Processing
- Undercut Display
- Integration with Unigraphics



For more information visit us at www.em-solve.com or call us today at 248-524-0366