

FF/cam

Version 7 Enhancements

THE HIGH EFFICIENCY CAM SOLUTION



INTRODUCING CAD/LESS CAM

Traditional standalone CAM Systems require the use of CAD modelling tools to create geometry to mask areas programmers want to avoid or to achieve a desired cutting condition. By eliminating the need to model geometry for these purposes, **FF/cam Version 7** eliminates the need to purchase and train programmers on CAD modelers or employ the use of other departments to accomplish these time consuming operations.

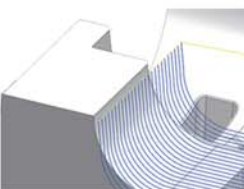
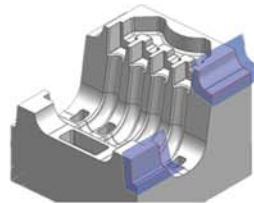
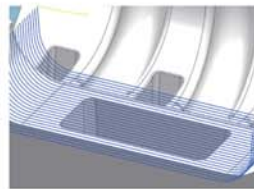
ONE/CLICK MASKING

Whether a simple shape or complex shape with one mouse click **FF/cam** automatically creates geometry to cover the desired area, stopping the cutting tool from entering areas that will be removed by another machining or manufacturing process such as drilling or EDM.



PATH/ASSIST

Whether you want to avoid areas to machine such as cavities, extend toolpath beyond surface geometry, create sharp corners or avoid steep walls; **FF/cam's Path Assist** let's you accomplish your task quickly and and easily without creating geometry.



MUCH MUCH MORE

Additional **FF/cam Version 7** Enhancements Include:

- Greatly Enhanced Graphics
- Newly Designed User Interface
- New Data Management Tools
- Enhanced View Controls
- Customizable Icons

Whether your application is plastic injection molding, die cast, forging, press tooling or parts machining; **FF/cam** provides all the necessary tools to maximize your machine tools and minimize or eliminate downstream processes. **FF/cam** highlights include:

- Elimination of Cutter Marks Providing Superior Surface Finish
- Reduction in Hand Polishing
- Fast Processing for Large Models
- Reduction in Tooling Cost
- Automatically Adjusts Toolpath in Areas of Excess Stock
- Multi-Axis Support

For more information visit us at www.em-solve.com or call us today at 248-524-0366